



System Overview: EMNS and Scheduling





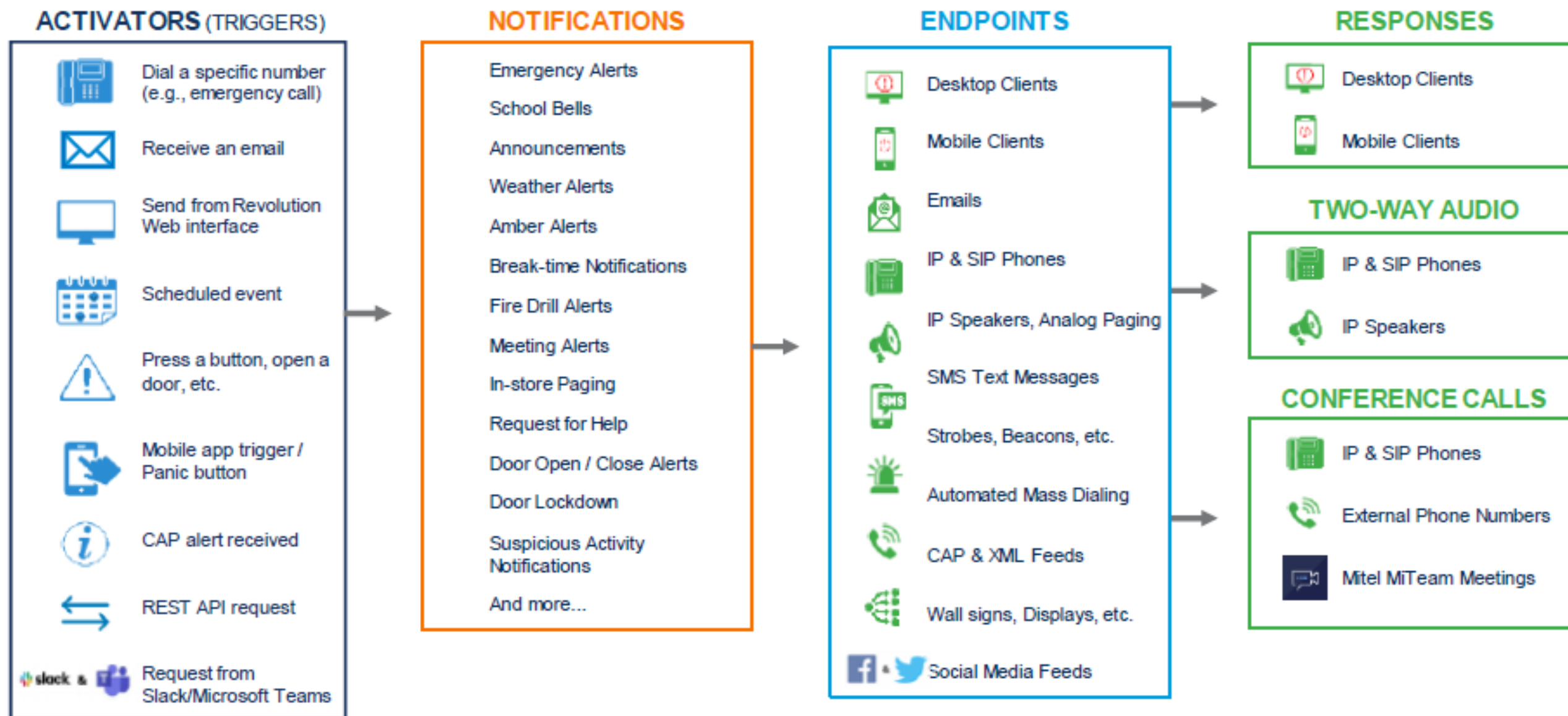
One Touch Emergency Notification Solution

How can Activate support your District?

- Turnkey safety solution
- Immediate District-wide communications
- Cost-effective and scalable
- Meets E911 – Kari’s Law & Ray Baum’s Act
 - Considered a Primary ENS
 - Supports Secondary notifications
- PLUS: Leverage ACTIVATE for everyday uses



High-Level ENS Overview



Mobile App, Desktop and Wearable Panic Buttons



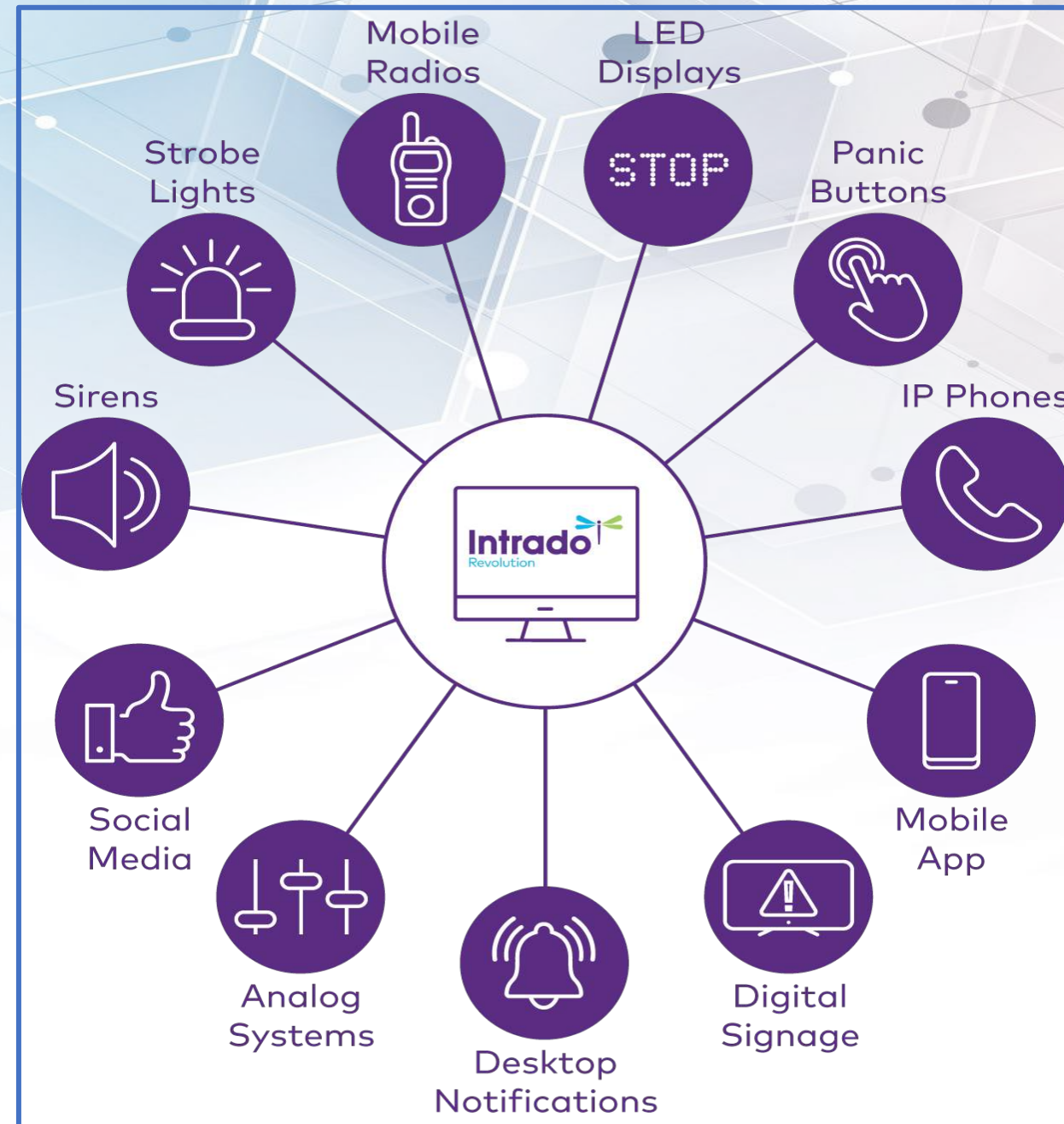


Activate Safety Shield

- The leading provider of 9-1-1 systems, services and infrastructure in the U.S.
- The ONLY ENS software with direct access to public safety access points (PSAPs)
- Pairs with existing ACTIVATE solutions to REDUCE response time
- Situation data automatically sent to 9-1-1 operators
- Real-time collaboration with First Responders

powered by
Intrado 

Instant Multichannel Communication

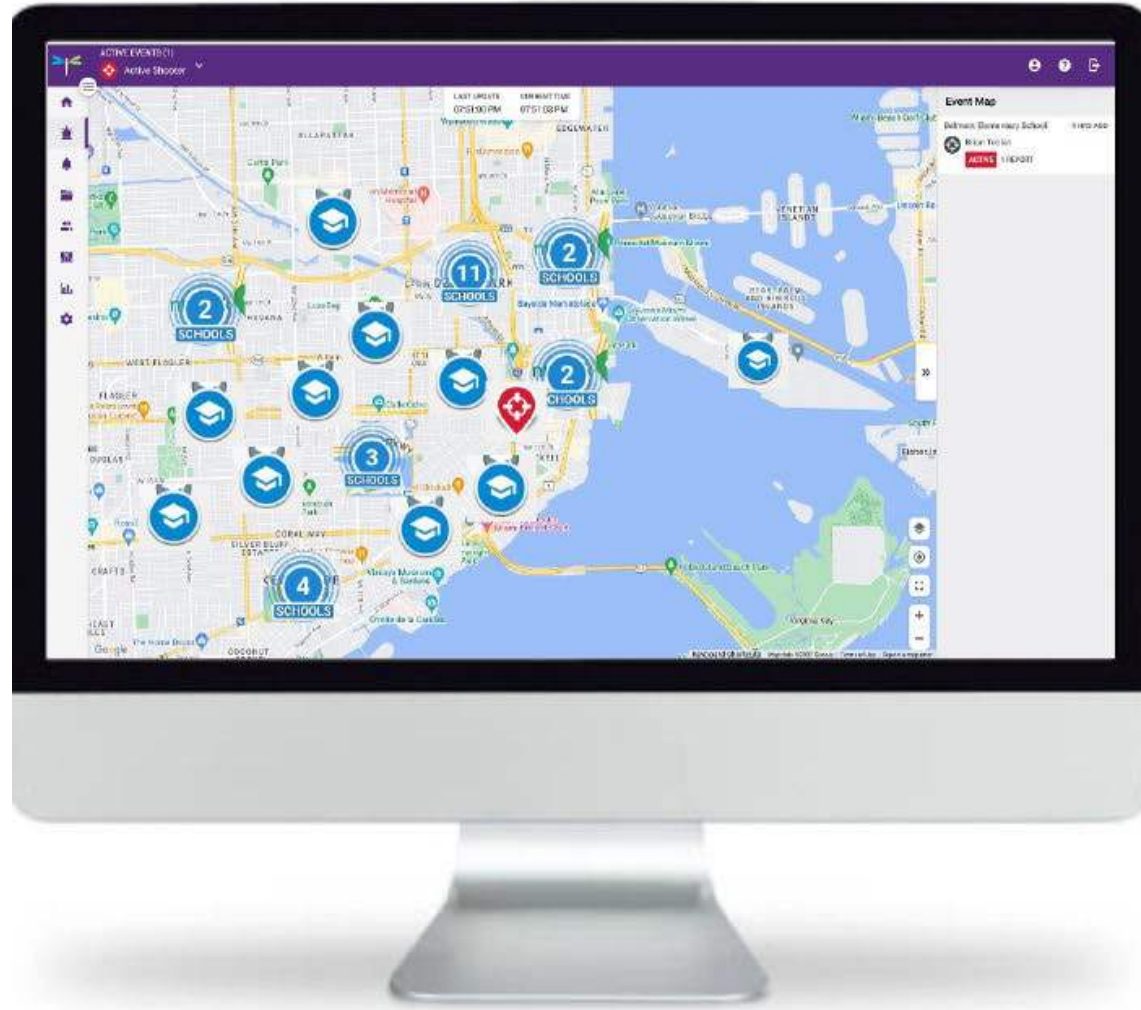


Activation Methods

When an alert notification is sent, staff will receive audible and text information on their Mobile APP as well as Staff PC's, Laptops, Horns and Paging Speakers.

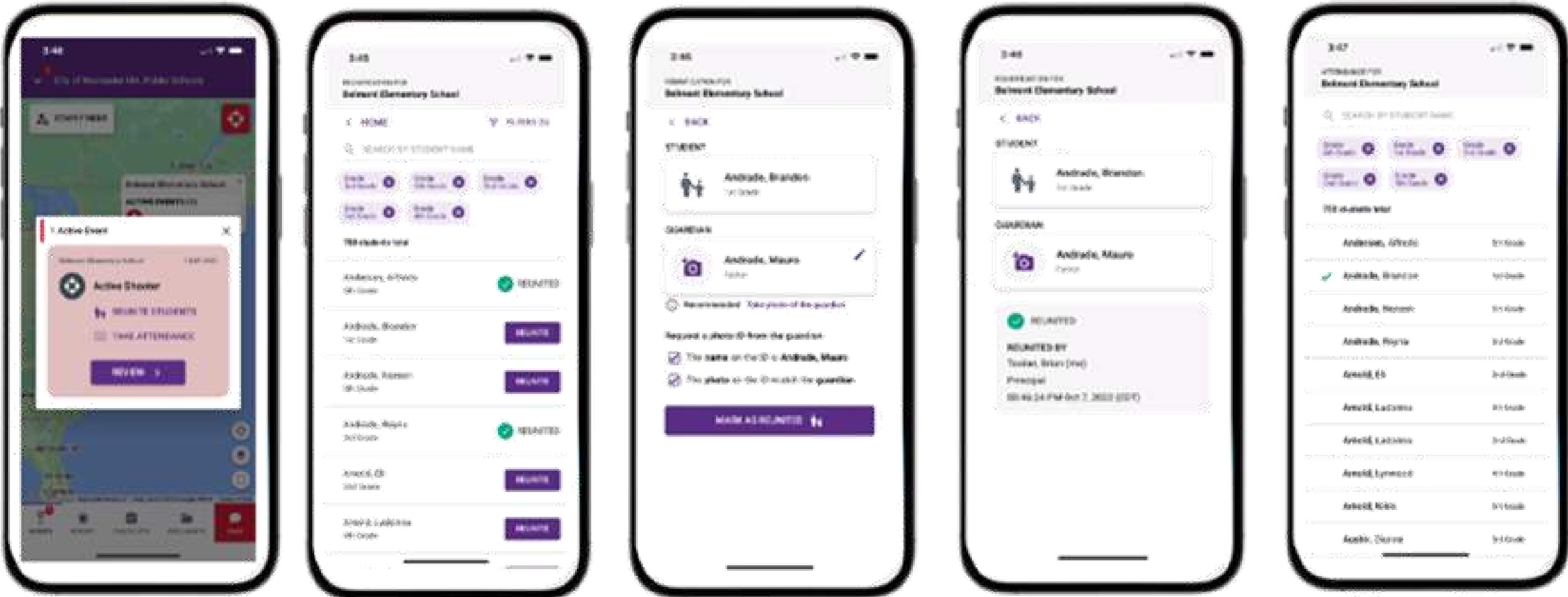


District-Wide Viewing

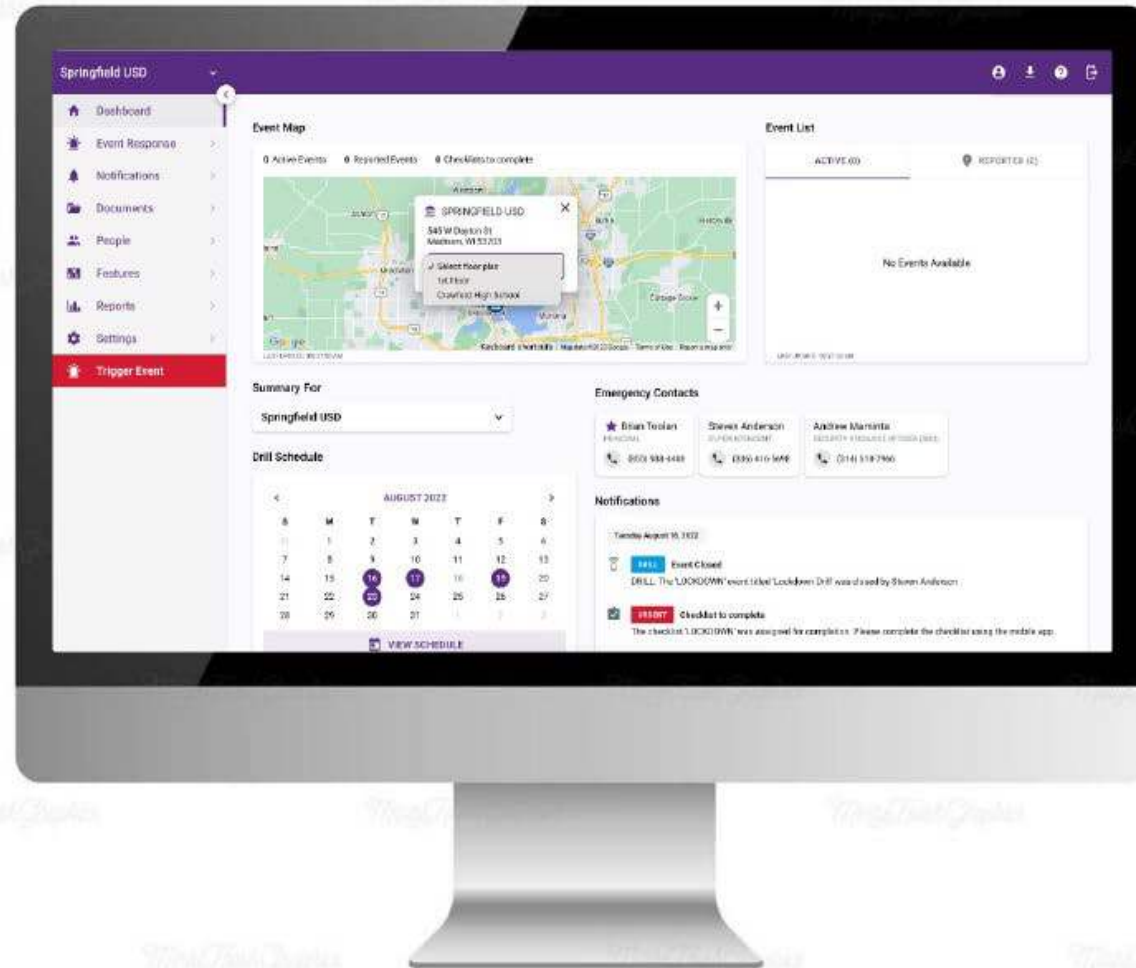


- Receive real-time incidents activated in any school
- Initiate lockdowns at schools due to police activity in the area.
- Two-way chat between 9-1-1 and school staff during incident
- View floor plans, emergency response plans and location of staff on school property
- Real-time reunification and attendance

Reunification & Real Time Attendance



Compliance & Reporting



- User friendly
- Open ecosystem for integrations
- All the tools required for compliance and response
 - Drill Management
 - Visitor Management
 - Student Attendance
 - Student Reunification
 - 9-1-1 Integrated
 - Floor Plan Accessibility
 - Response Plan Library
 - Custom Configurable
- Comprehensive reporting with export capabilities

Leveraging Syn-Apps Scheduling for Every Day Use

Simple Calendar Application

Create, View, and Edit Bell Schedules for Multiple Sites in ONE easy-to-use, familiar calendar-style interface just like a standard desktop calendar

The screenshot displays the ACTIVATE Scheduler application interface. On the left is a dark blue sidebar with navigation icons and labels: Dashboard, Notifications, Scheduler, Configuration, System Status, Users Contact & Sites, Logging, Global Settings, and Help. The main area shows a calendar for December 2019. A 'SCHEDULER' header with a calendar icon and 'Show Templates' link is at the top. Below it is a list of calendars with checkboxes: 'All Calendars' (checked), 'New Middle School', 'New School Assembly', 'New School Calendar', 'South Whittier Elementary School 1', and 'South Whittier Graves Middle School'. The calendar grid shows days of the week (Mon-Fri) and dates. Events are color-coded: pink for 'Lunch Break' and green for 'Morning Bell New School HS'. A yellow arrow points from the calendar to a modal window on the right. The modal is titled 'Name*' and contains the following fields and options:

- Name*: Morning Bell New School HS
- Add to existing calendar*: New School Calendar (with a plus icon)
- Date Picker: 12/09/2019
- Time Picker: 08:00:00 am
- Local Timezone: America/Los Angeles (UTC-08:00)
- Repeat Event: Daily (selected)
- Repeat Event Daily: Monday - Friday (selected)
- Repeat every 1 day(s)
- End Repeat: Never (selected)
- On a specific date: 12/20/2019
- Pause event: ☐
- Use Activator Text: ☒
- Title: Morning Bell

Including Day Templates

Choose Bells for an entire campus and/or multiple campuses that share the same schedules with a single click -- OR ---create Customized Bell Zones, down to the individual endpoint level– for campuses with different schedules in grades zones or special day class schedules. Update zones **ON THE FLY** as needed – all through the simple web interface.

The screenshot displays the Syn-Apps SCHEDULER interface. On the left is a vertical navigation menu with icons for Dashboard, Notifications, Scheduler, Configuration, System Status, Users Contacts & Sites, Logging, Global Settings, and Help. The main area is titled 'SCHEDULER' and includes a 'New School Calendar' dropdown and a 'Hide Templates' link. Below this, a light blue box contains the instruction 'Drag a template to a day on the calendar to generate templates.' Two templates are shown: 'HS Minimum Day w Brunch' and 'HS Regular Day w/ Brunches'. A red circle highlights these templates, and a blue arrow points from them to the calendar grid. The calendar shows the month of December 2019, with days of the week (Sun-Sat) and dates (1-31). The calendar grid is partially populated with green and orange blocks representing scheduled events. For example, on Tuesday, Wednesday, and Thursday, there are green blocks for '06:55:00 am HS Regular Day w/ B' and '07:00:00 am HS Regular Day w/ B'. On Thursday and Friday, there are orange blocks for '01:29:00 am HS Minimum Day w B' and '01:34:00 am HS Minimum Day w B'. The interface also includes a 'NEW EVENT' button in the top right corner and a status bar at the bottom showing the time as 12:37:00 PM PST.



One Touch Emergency Notification Solution

When every second counts...

- Designed specifically to meet the needs of Education
- Compatible with over 93% of current hardware and communication systems on the market
- 100% Integration based on individual District and Campus needs
- Code and mandate compliant
- Significantly reduces emergency response times
- Informs First Responders of critical information before arrival
- Leveraged investment for day-to-day bells and other situations

GLOBALCTI

Global solutions. World class service.

www.GCTI.com

Questions?



New Wearable Panic Buttons



Design Specs & Benefits – device total weight 2oz

- Bluetooth Low Energy, Wifi and LTE for 100% coverage
- Dual SIM card capability (FirstNet & Carrier Agnostic)
- Haptic vibration to all devices for fast emergency alert
- Daily “health checks” provides reports on device status.
- Programmable user information
- Two programmable buttons (face and side)
- Go kits for field trips, bus drivers and off campus events
- Program to lock all doors upon activation
- Customize with your district logo (additional terms apply)
- Cancel an accidental alert
- Recharge only once per year
- 2.3oz total weight